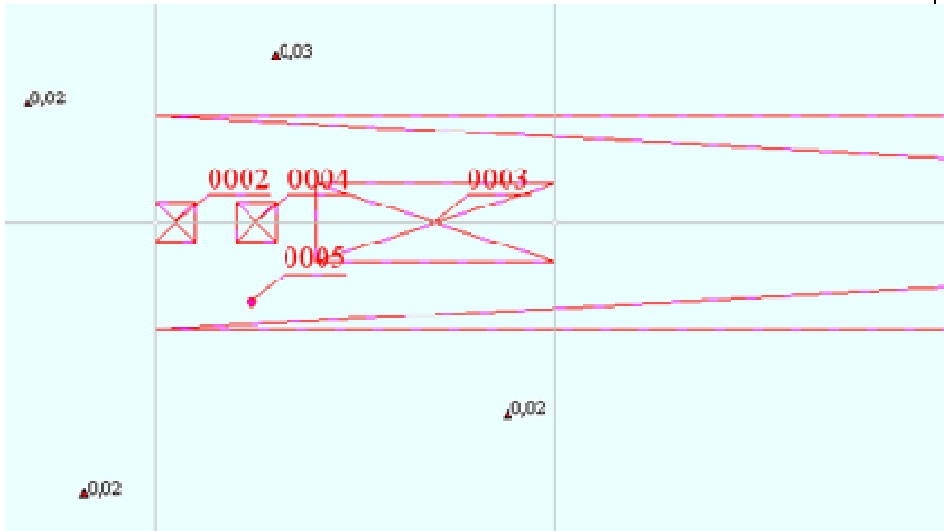


Environmental Impact Assessment of works for upgrading E-60 East -West Highway section between Agara East and Didi Sative (km 106 to km 121)

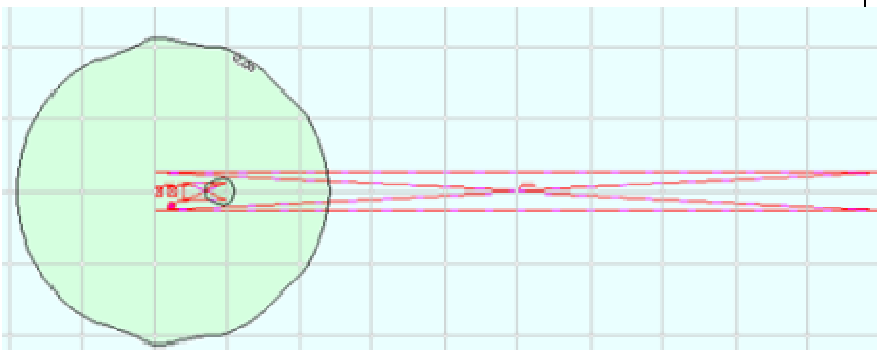
## **Annex - Pollution dispersion maps**

Environmental Impact Assessment of works for upgrading E-60 East -West Highway section between Agara East and Didi Sative (km 106 to km 121)

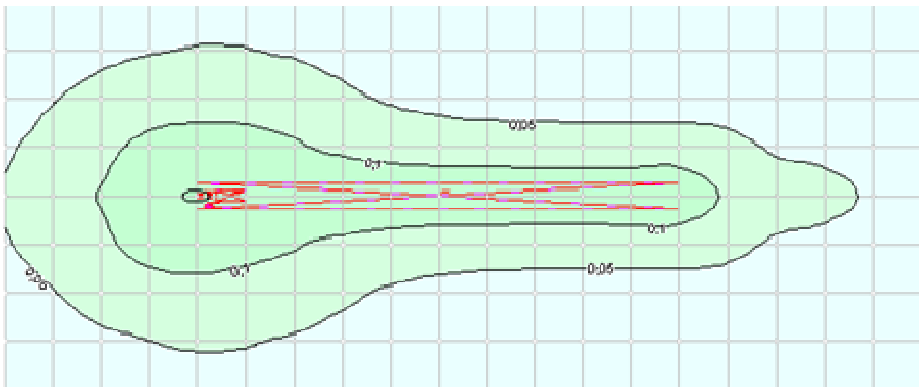
**Graphic models of emission from engines of machinery – construction**



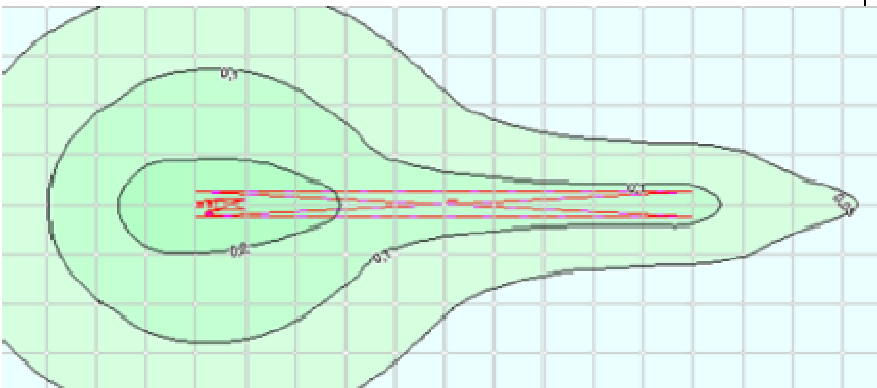
Ironoxides(code -123)spatialdistribution



Manganeseanditsoxides(code -143) spatialdistribution

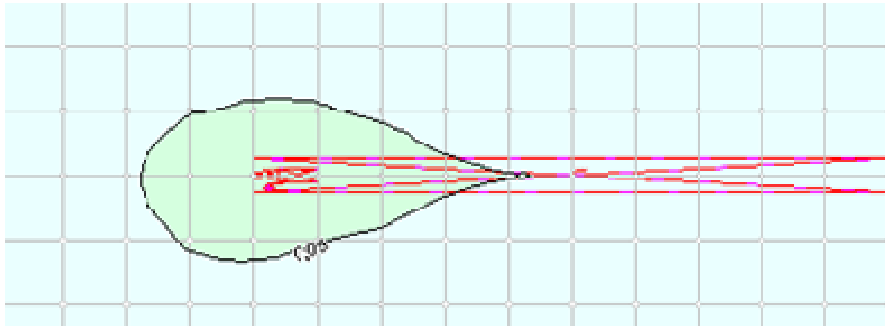


Nitricoxide(code -304) spatialdistribution

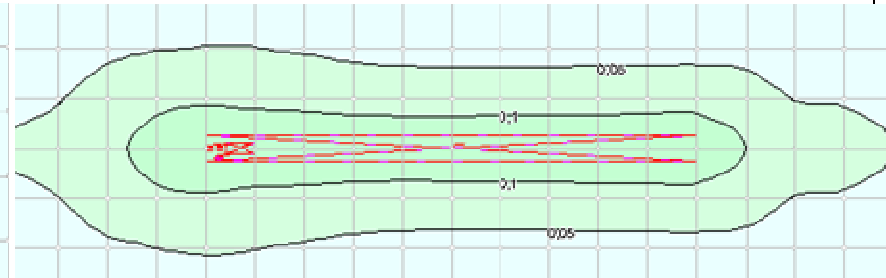


Soot(code -328)spatialdistribution

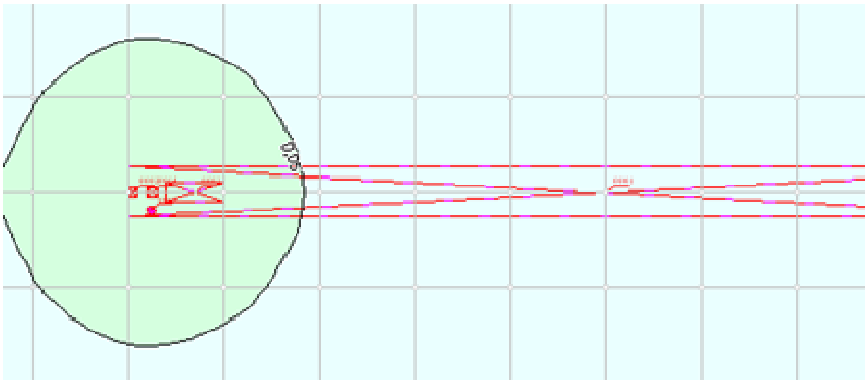
Environmental Impact Assessment of works for upgrading E-60 East -West Highway section between Agara East and Didi Sative (km 106 to km 121)



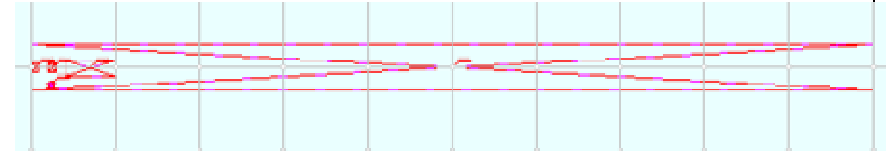
Sulphurdioxide(code -330) spatialdistribution



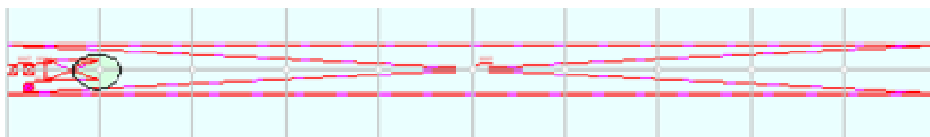
Carbonoxide(code -337) spatialdistribution



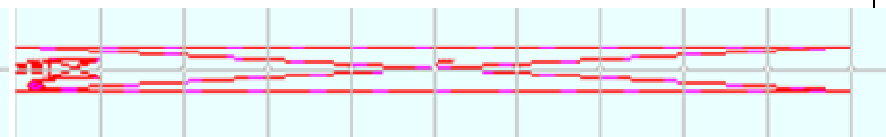
Gaseousfluorides(code -342) spatialdistribution



Benzoapyrene (code-703) spatialdistribution

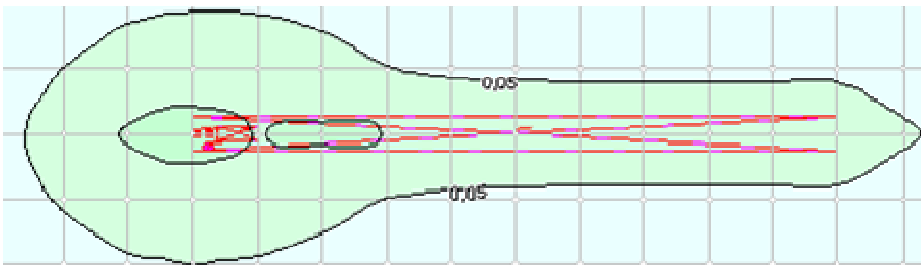


Formaldehyde(Code -1325)spatialdistribution

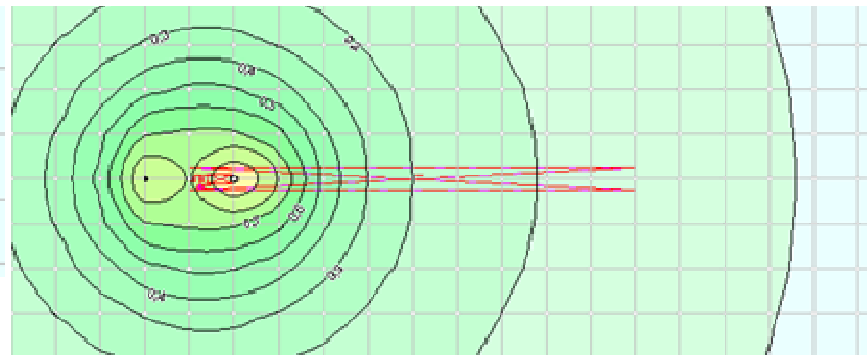


Petroleumhydrocarbon petrol fraction(code -2704) spatialdistribution

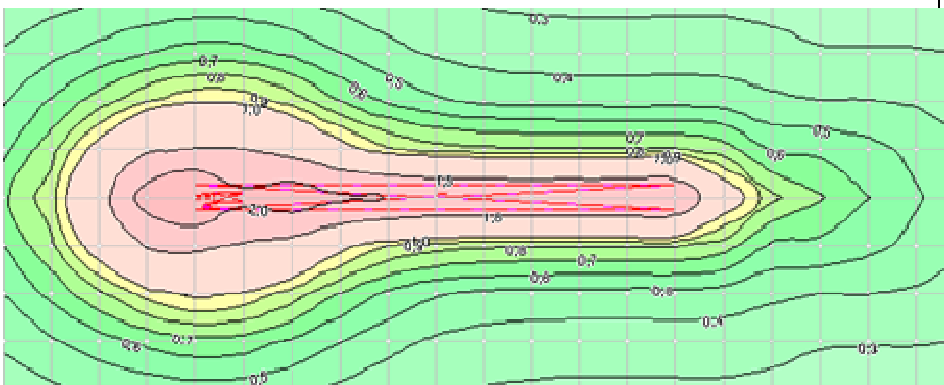
Environmental Impact Assessment of works for upgrading E-60 East -West Highway section between Agara East and Didi Sative (km 106 to km 121)



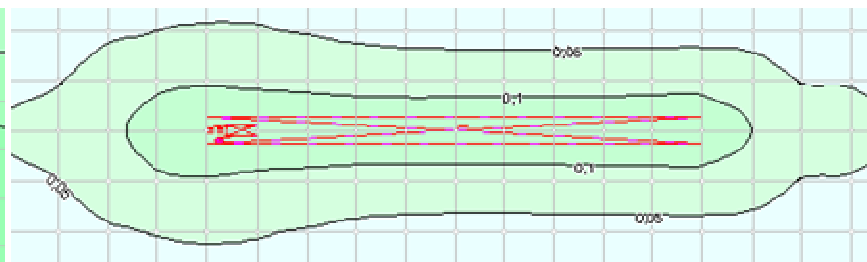
Petroleumhydrocarbon kerosenefraction(code -2732) spatialdistribution



Inorganicdust(code -2902) spatialdistribution



Nitrogendioxide(code -3301) spatialdistribution



Summary group(337 +2908) spatialdistribution



Summary impact group(3301 +304 +330)spatialdistril

**Graphic modeling of emission - operations phase**

Nitricoxide(code -304) spatialdistribution

Sulphurdioxide(code -330) spatialdistribution

ERROR: ioerror  
OFFENDING COMMAND: image

STACK: