

Environmental Impact Assessment of works for upgrading E-60 East -West Highway section between Agara West and Didi Sative (km 114 to km 126)

## **1 Annex - Pollution dispersion maps**

Environmental Impact Assessment of works for upgrading E-60 East -West Highway section between Agara West and Didi Sative (km 114 to km 126)

## **1.1 Dispersion of CO, NO<sub>2</sub> and PM<sub>10</sub> concentrations for "zero" alternative**

Environmental Impact Assessment of works for upgrading E-60 East -West Highway section between Agara West and Didi Sative (km 114 to km 126)

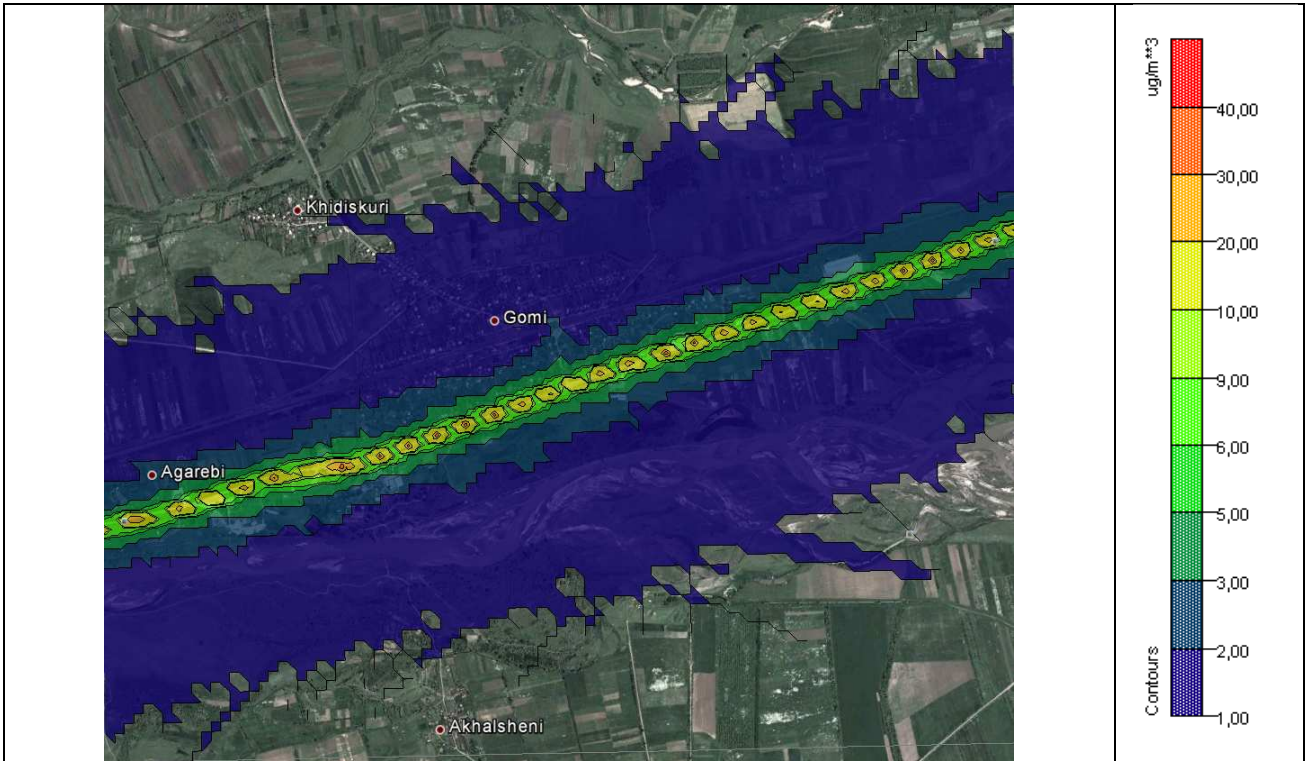


Figure 1.1 NO<sub>2</sub> dispersion\* along E-60 EWH section between Agara and Didi Sative, 114 - 120 km of the existing road, "Zero" alternative

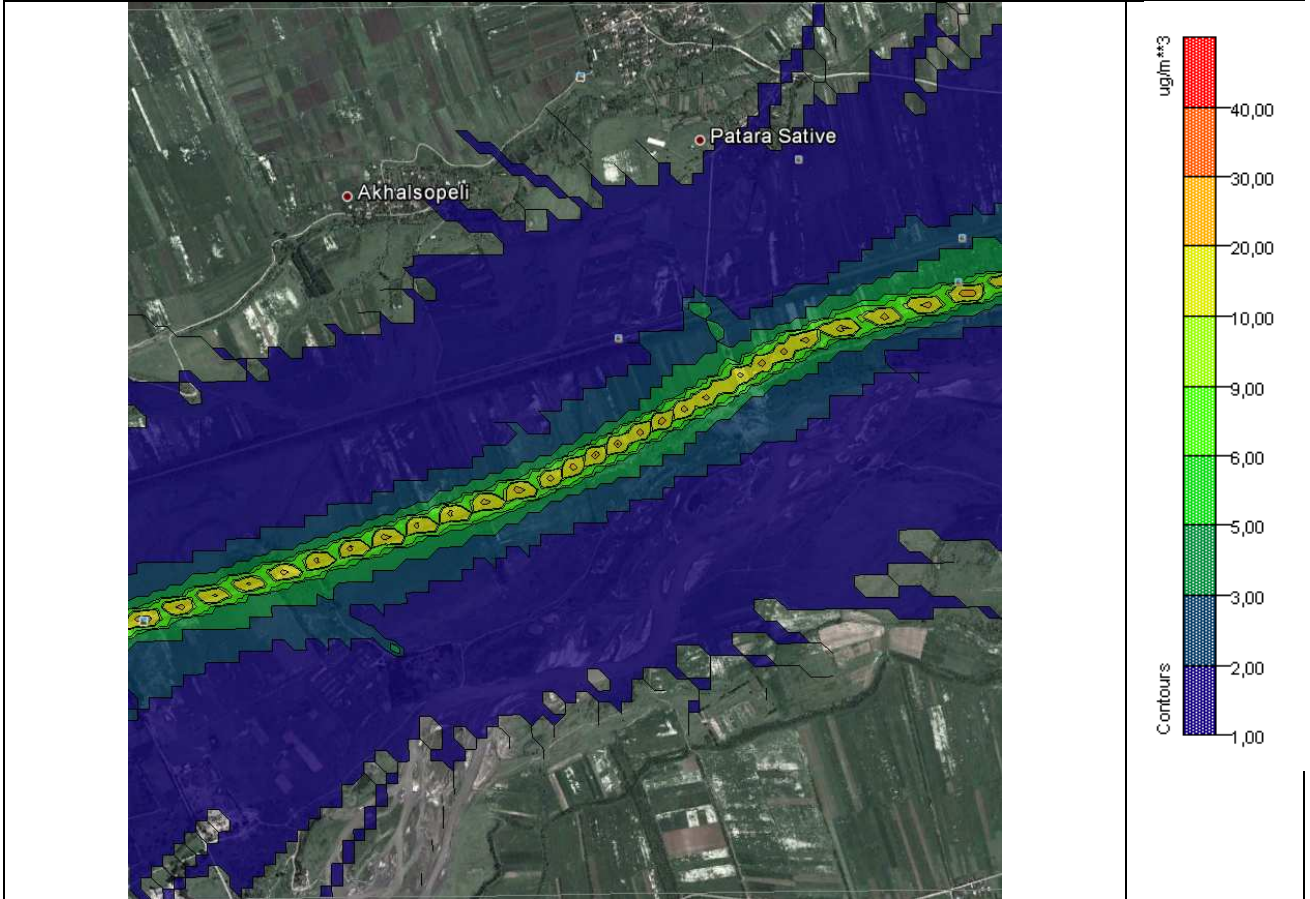


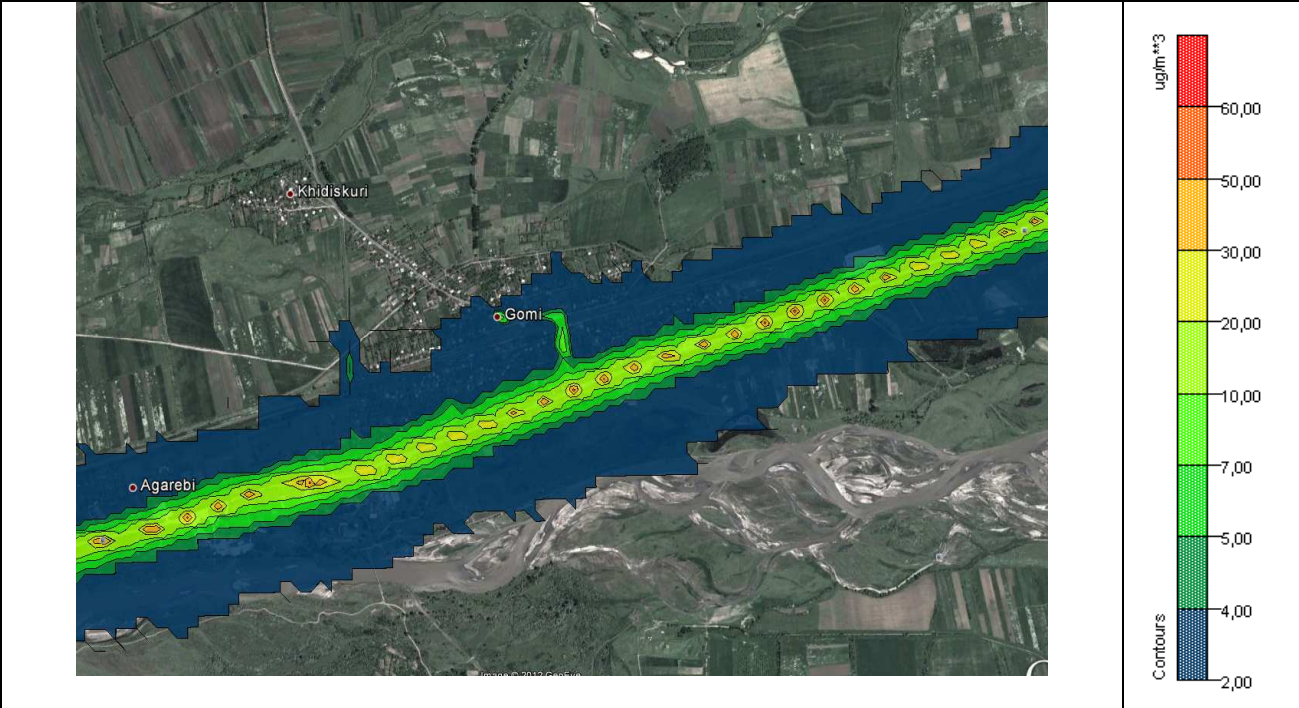
Figure 1.2 NO<sub>2</sub> dispersion\* along E-60 EWH section between Agara and Didi Sative, 120 - 126 km of the existing



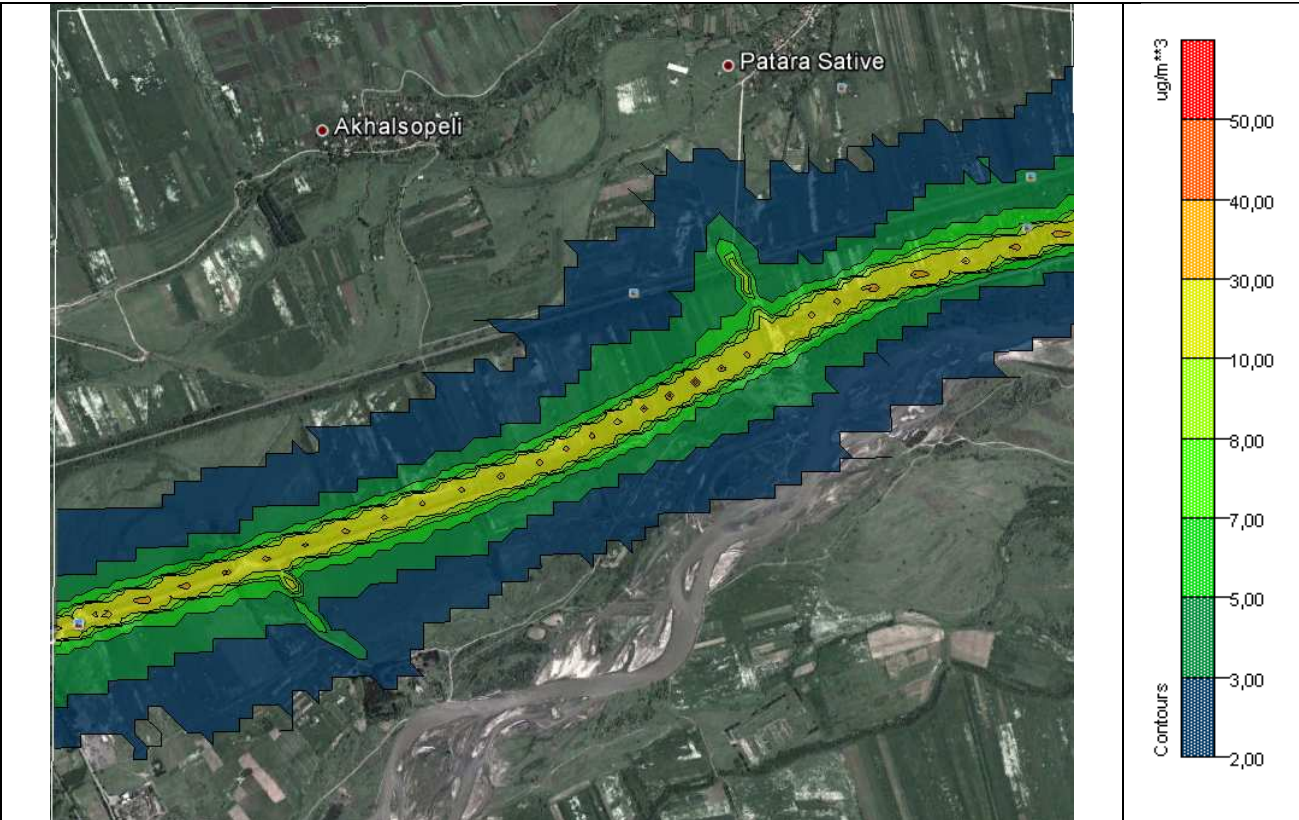
Environmental Impact Assessment of works for upgrading E-60 East -West Highway section between Agara West and Didi Sative (km 114 to km 126)

*road, "Zero" alternative*

\*Modeling software CALRoads, Google Earth visualisation



**Figure 1.3** CO dispersion\* along E-60 EWH section between Agara and Didi Sative, 114 - 120 km of the existing road, "Zero" alternative



Environmental Impact Assessment of works for upgrading E-60 East -West Highway section between Agara West and Didi Sative (km 114 to km 126)

**Figure 1.4** CO dispersion\* along E-60 EWH section between Agara and Didi Sative, 120 - 126 km of the existing road, "Zero" alternative

\*Modeling software CALRoads, Google Earth visualisation



**Figure 15** PM<sub>10</sub> dispersion\* along E-60 EWH section between Agara and Didi Sative, 115 - 121 km of the existing road, "Zero" alternative

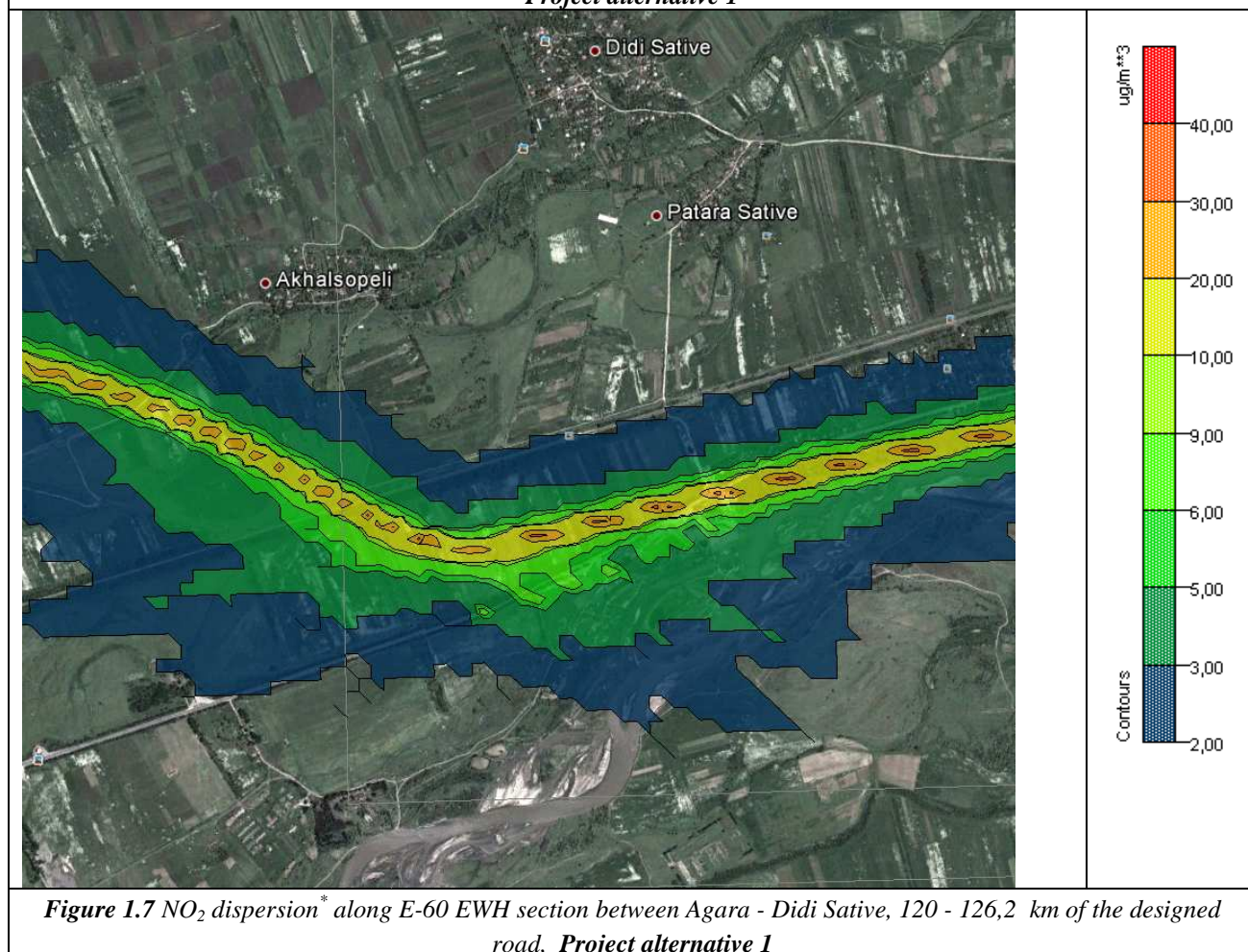
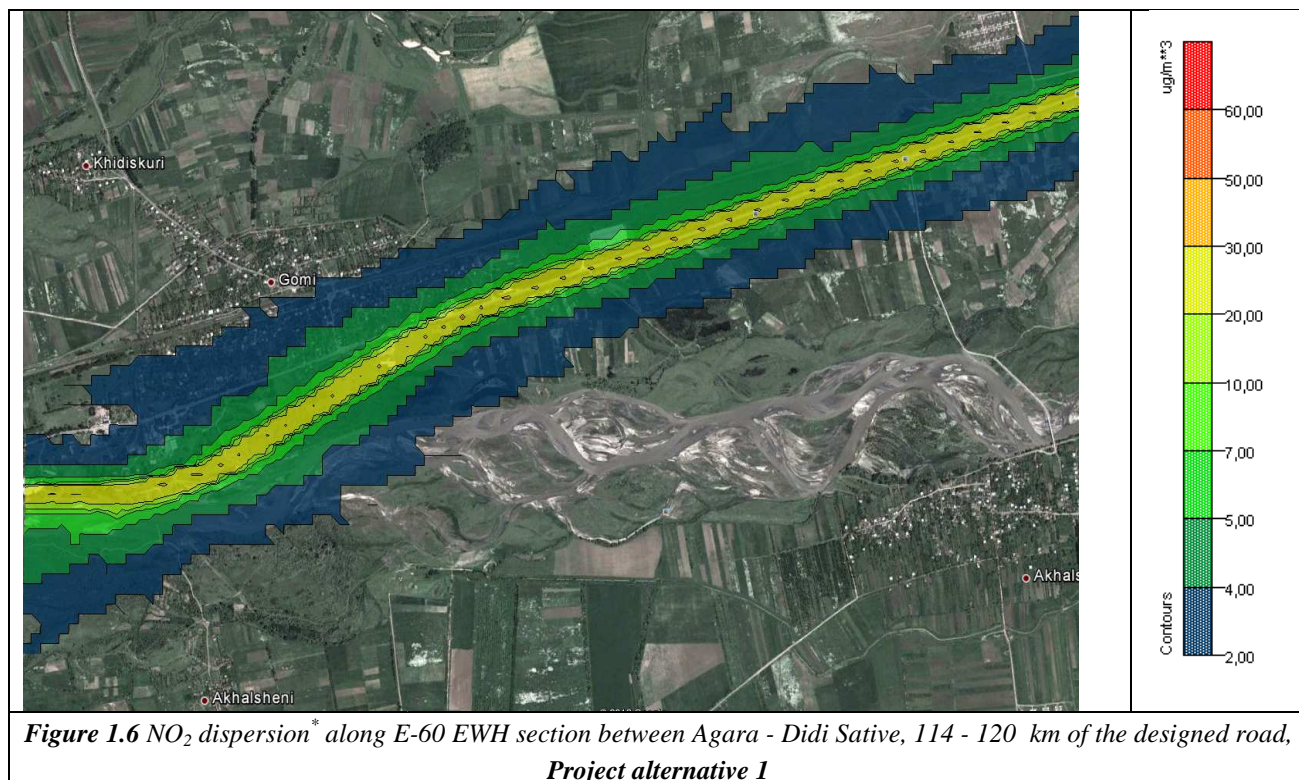
\*Modeling software CALRoads, Google Earth visualisation

Environmental Impact Assessment of works for upgrading E-60 East -West Highway section between Agara West and Didi Sative (km 114 to km 126)

## **1.2. Dispersion of CO, NO<sub>2</sub> and PM<sub>10</sub> concentrations for Project alternative 1**



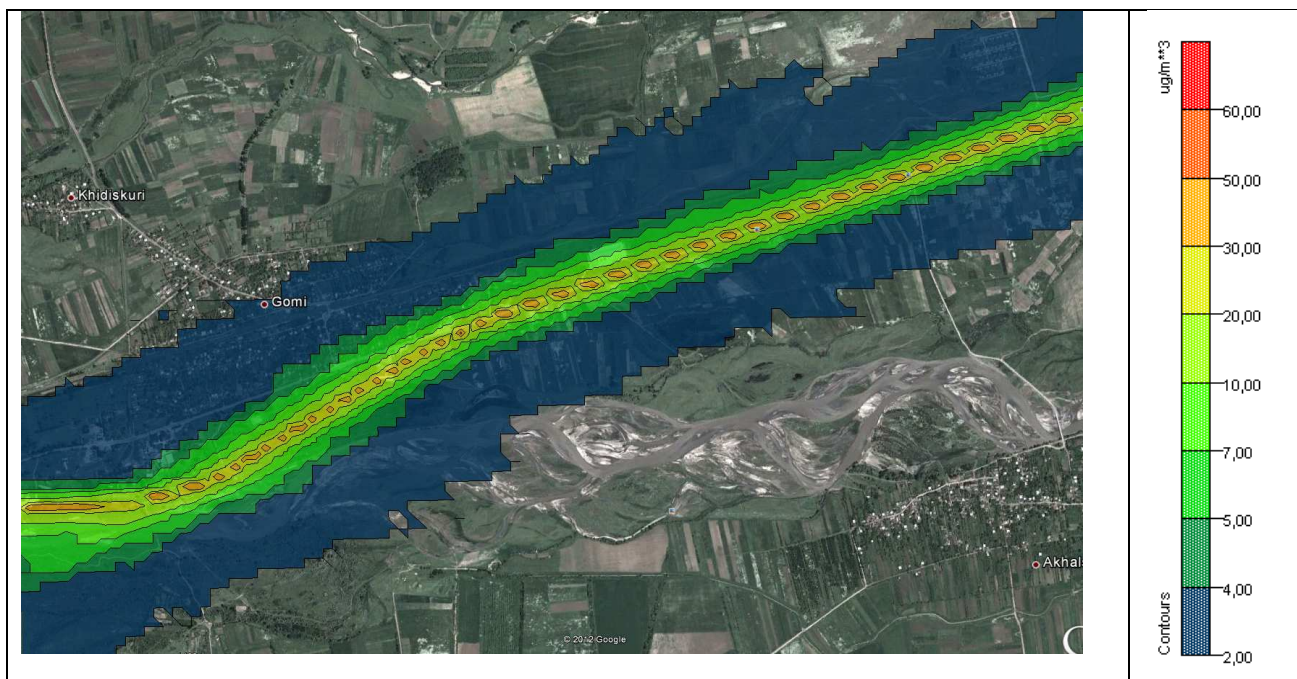
Environmental Impact Assessment of works for upgrading E-60 East -West Highway section between Agara West and Didi Sative (km 114 to km 126)



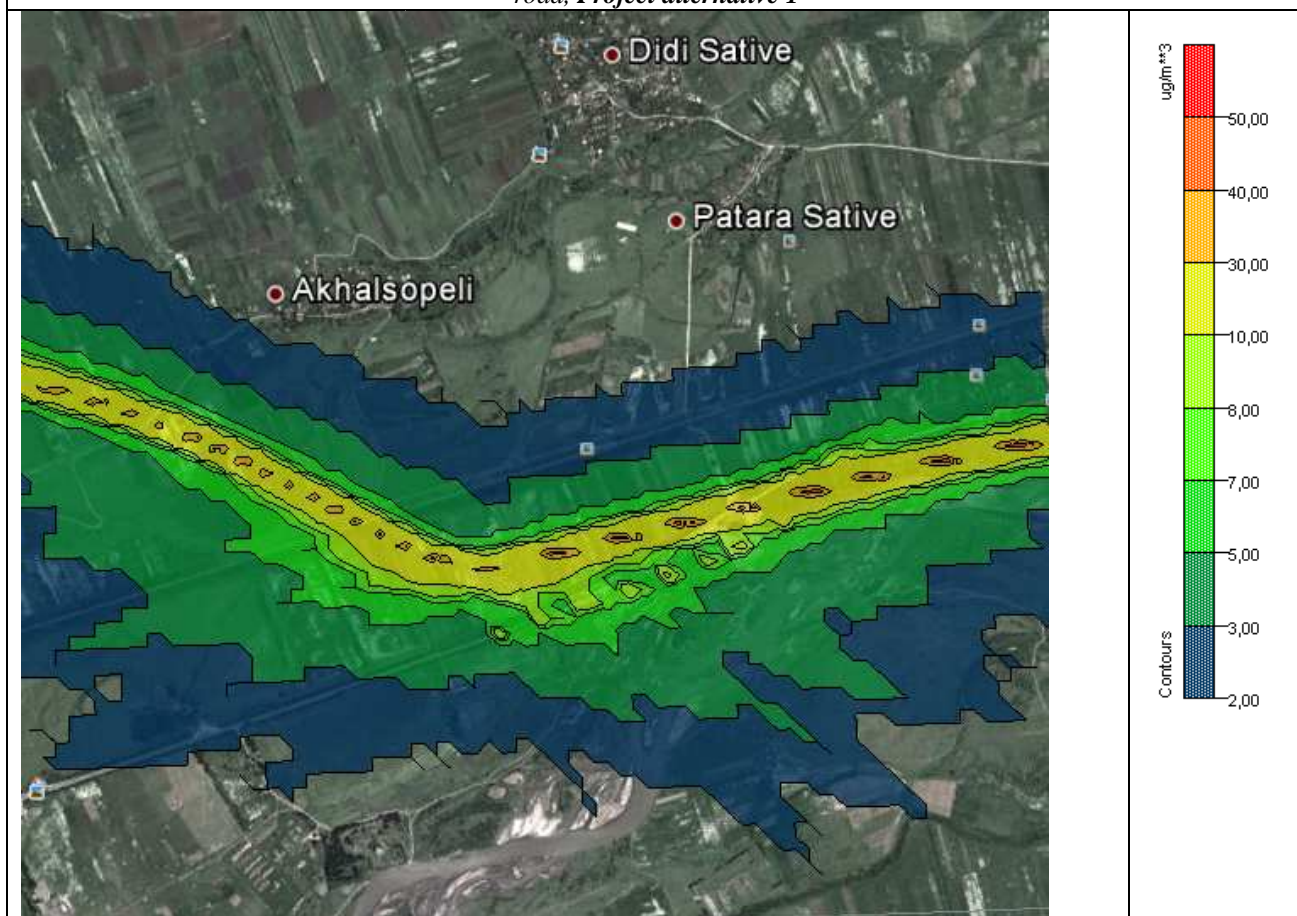
\*Modeling software CALRoads, Google Earth visualisation



Environmental Impact Assessment of works for upgrading E-60 East -West Highway section between Agara West and Didi Sative (km 114 to km 126)



**Figure 1.8** CO dispersion\* along E-60 EWH section between Agara and Didi Sative, 114 - 120 km of the designed road, **Project alternative 1**



**Figure 1.9** CO dispersion\* along E-60 EWH section between Agara and Didi Sative, 120 - 126,2 km of the designed road, **Project alternative 1**

\*Modeling software CALRoads, Google Earth visualisation



Environmental Impact Assessment of works for upgrading E-60 East -West Highway section between Agara West and Didi Sative (km 114 to km 126)